

Integrated Planning for Climate Change and Biodiversity

Syllabus





Integrated Planning for Climate Change and Biodiversity



COURSE GOAL AND STRUCTURE

The overall goal of this course is to enhance the capacity of key stakeholders to integrate climate change and biodiversity into integrated land-use planning to achieve compatible conservation and development outcomes.

This is a self-paced learning experience where you may self-direct your learning process through the video “Integrated Planning: People, Nature & Growth” and the four modules. You may start wherever you want, but we recommend to watch the video first and to take the lessons within a module in the suggested order.



Integrated Planning for Climate Change and Biodiversity

CONTENT, LEARNING OBJECTIVES AND ASSESSMENT

MODULES	LESSONS	LEARNING OBJECTIVES	ASSESSMENT
1. Connecting land use, climate change and biodiversity	<ul style="list-style-type: none"> The spatial planning – biodiversity – climate change nexus Principles and concepts of land-use planning for incorporating biodiversity and climate change into spatial development plans The role played by protected areas in village planning 	<ul style="list-style-type: none"> Identify the interaction of climate change and biodiversity with land-use plans; Identify principles and concepts of land-use planning for incorporating biodiversity and climate change into spatial development plans; Explain the role played by protected areas and village planning. 	<ul style="list-style-type: none"> Quiz
2. Inter-sectoral and inter-institutional collaboration	<ul style="list-style-type: none"> Introduction to international laws and policies Cross-sector approach to laws and policies concerning integrated land use planning Identification of all relevant stakeholders in integrated land use planning 	<ul style="list-style-type: none"> Explain policies and laws across sectors Identify relevant stakeholders across institutions 	<ul style="list-style-type: none"> Quiz
3. Public participation in decision making	<ul style="list-style-type: none"> Positioning stakeholders in the planning and decision making process Stakeholder engagement in the planning and decision-making process 	<ul style="list-style-type: none"> Identify stakeholder positioning in the planning and decision making process; Explain how stakeholders can engage in planning and decision making process. 	<ul style="list-style-type: none"> Quiz
4. Regional planning for harmonization and connectivity	<ul style="list-style-type: none"> Multilevel and multi-scale governance Transboundary governance 	<ul style="list-style-type: none"> Identify the different layers of governance involved in planning across village, district, national, and regional levels; Identify ways to collaborate across national borders. 	<ul style="list-style-type: none"> Quiz

Learning Materials



INTEGRATED PLANNING: PEOPLE, NATURE & GROWTH (VIDEO)

- This video is the ideal place to start the course.
- Enjoy a fascinating story and get to know all the various issues and challenges associated with climate change and biodiversity.
- These issues and challenges are essential to spatial planning and will be explored more in the course.
- Discover how to deal with those challenges and what the solutions are.
- As you progress through the course you will encounter some of the characters of this story - Meet them now!

Learning Materials

Connecting Land-use, Climate Change and Biodiversity

"The Spatial Planning, Biodiversity & Climate Change nexus"

"Practical Approaches for Incorporating Biodiversity & C.C. into Spatial Planning"

"The Role of Protected Areas in Village Planning"



LESSONS

The [modules](#) are divided into several [lessons](#), which represent the core learning components of the course.

- Each module addresses specific learning objectives.
- The first two modules comprise three lessons each, while module three and four are shorter with just two lessons each.
- Each lesson contains video lectures, interactive slides and animations as well as practice exercises.
- These exercises give you an opportunity to check your knowledge and will help you to deepen your understanding of the issues considered.
- You may interrupt a lesson at any point. The system keeps track of your position. Upon your return it automatically takes you to the point where you were.
- Feel free to re-take a lesson to look at the content again.

Activities

KNOWLEDGE ASSESSMENT



QUIZZES

- Each module has a quiz to test your knowledge and further your learning process.
- The quiz only becomes available after you have completed the lessons of the respective module.
- Quizzes are composed of:
 - Multiple choice questions
 - True or false statements
 - Matching questions
 - Drag and drop exercises.
- You can attempt each quiz twice.
- Only your highest grade is registered.
- After attempting a quiz you will receive extensive feedback. We encourage you to use this opportunity to review the questions and to deepen your knowledge.

PASSING REQUIREMENTS

- To pass the course, you must submit and pass all 4 [Quizzes](#) (one per module).
- The total score of the course is 480 points. The minimum passing grade is 288 points (60%).

GRADING SCALE

- 100 % = Excellent
- 80 % - 99 % = Very Good
- 61 % - 79 % = Good
- 60 % = Pass
- 60 % > = Try again

GOOD LUCK!

Activities

STUDY PLAN



- Use the Study Plan to organize your learning process and stay on track on the tasks you should complete in the course.
- As soon as you finish an activity, visit the Study Plan to update it, ticking off the task completed. This will automatically record your progress in the course.
- Make sure you have updated all activities completed before you move to the following module.
- Your Study Plan fully populated (all activities ticked off) is a requirement to obtain the Certificate of Completion.

STAY ON TRACK

TELL US YOUR OPINION



Please help us improve this course!

We invite you to share your opinion on each module in a brief “Tell us your opinion” survey. **All answers are anonymous.** Your opinion and inputs are highly valued and they will help us improve the quality of the course.

EVALUATION SURVEYS

Modules	Number of Questions	Time
Module 1	10 Questions	10 - 15 minutes
Module 2	2 Questions	5 minutes
Module 3	2 Questions	5 minutes
Module 4	13 Questions	15 - 20 minutes

Resources

PDFS



- All lessons of a module are combined in a PDF that you can download for offline reference.
- Click on 'Module in PDF' to access it.

TAKEAWAYS



- They summarize the most important aspects considered in each module.
- Takeaways may be a PDF or a video.
- Review it carefully before advancing to the knowledge assessment.
- You can find it each the module page under 'Module Takeaways'.



LINKS & RESOURCES



- Each module has further useful material and resources that you can refer to at any point throughout the course.
- These resources can further improve your understanding of the concepts covered in the modules and enhance your performance in the quizzes.
- You can find it on the module page under 'Resources & Links'.

DISCLAIMER NOTE

The linked websites are not under the control of UNITAR or the United Nations. Neither UNITAR nor the United Nations are responsible for the content of any linked website or any link contained in a linked website. UNITAR provides these links only as a convenience, and the inclusion of a link or reference does not imply the endorsement of the linked website by UNITAR or the United Nations.

Certificates

PASSING REQUIREMENTS

To obtain a Certificate of Completion, it is necessary to:

- Earn **all** four badges (to do that you need to pass **all** quizzes)
- Have a fully populated (all activities ticked off) study plan

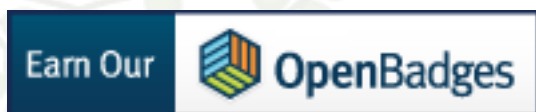
CERTIFICATE

Upon the successful completion of the entire course (see the passing requirements) your certificate will be available on the platform. This is what it will look like:

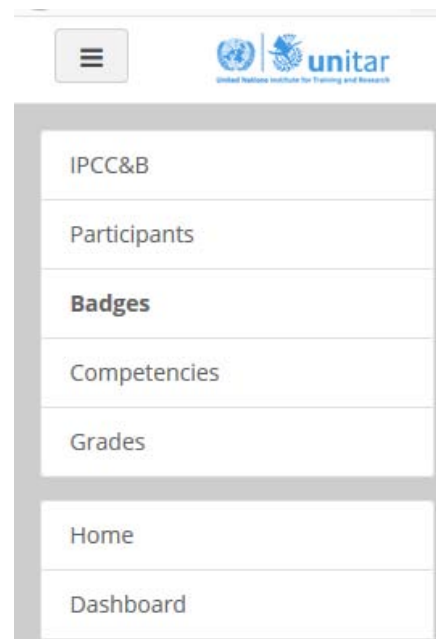


START LEARNING AND GET YOURS NOW!

Badges



- Badges recognize your achievements and progress during the course.
- When you have successfully completed a module you will automatically receive a badge.
- You will be notified once you receive a badge.
- There are four badges in total (1 per module)
- Earning all four badges is a requirement to obtain the Certificate of Completion.



THIS IS WHAT YOUR BADGES WILL LOOK LIKE:



COLLECT THEM ALL!




Sharing your achievement

SHARING BADGES

- Once you have obtained your badges, you can share them.
- Sharing your badges online is a good way to valorise your verifiable skills.
- For sharing your badges you need to create your personal “backpack” (see link below).
- A “backpack” is an online space where you can store all the badges you collected, either from UNITAR platform or other learning management systems.
- You will be able to group them into collections and share them on social media.

SIGN UP



backpack.openbadges.org

Create a Backpack account

Email @

First Name

Last Name

Password 🔒

Confirm 🔒

Password requirements:

- ☐ must be at least 10 characters long
- ☐ must contain at least one lowercase letter
- ☐ must contain at least one uppercase letter
- ☐ must contain at least one number
- ☐ must contain at least one special character
- ☒ may not contain sequences of three or more repeated characters

SIGNUP

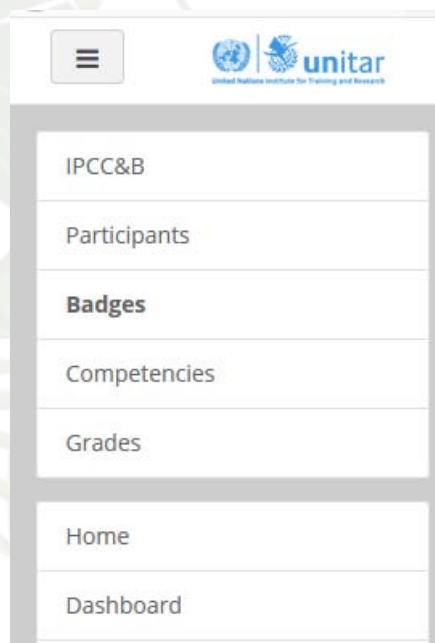
[Go to login page](#)

CREATING A BACKPACK & LINKING BADGES

To create your backpack connect to this website: <https://backpack.openbadges.org/> and create your account.

Sharing your achievement

LINKING BADGES TO YOUR BACKPACK



To link your badges to your backpack, you need to be signed in into your backpack account and the learnatunitar.org environment.

Simply follow these steps:

- Go to your backpack account and sign in
- Also sign into your learnatunitar.org account
- Access the course's badges page and select the badge you wish to add to the backpack.

Image	Name ▲
	Integrated Planning for Climate Change and Biodiversity

- Click on “connect to a backpack”
- You will be asked to create a “backpack connection”: insert the email address that you used to create your backpack account (be sure to have the backpack account open at the same time).
- Click on the “connect to backpack” button.
- Now a verification email will be send to your email address.
- Log into your e-mail account and confirm the connection by clicking on the provided link. Afterwards, click on “Save changes”.



Badges

Collections



- From now on when you click on badges you earned you will have the possibility to send them to your backpack by clicking on “add to backpack” and “send”.
- These badges are then stored into your backpack
- You can classify them into collections
- You are also able to share them on websites and social media such as LinkedIn, Twitter or facebook.

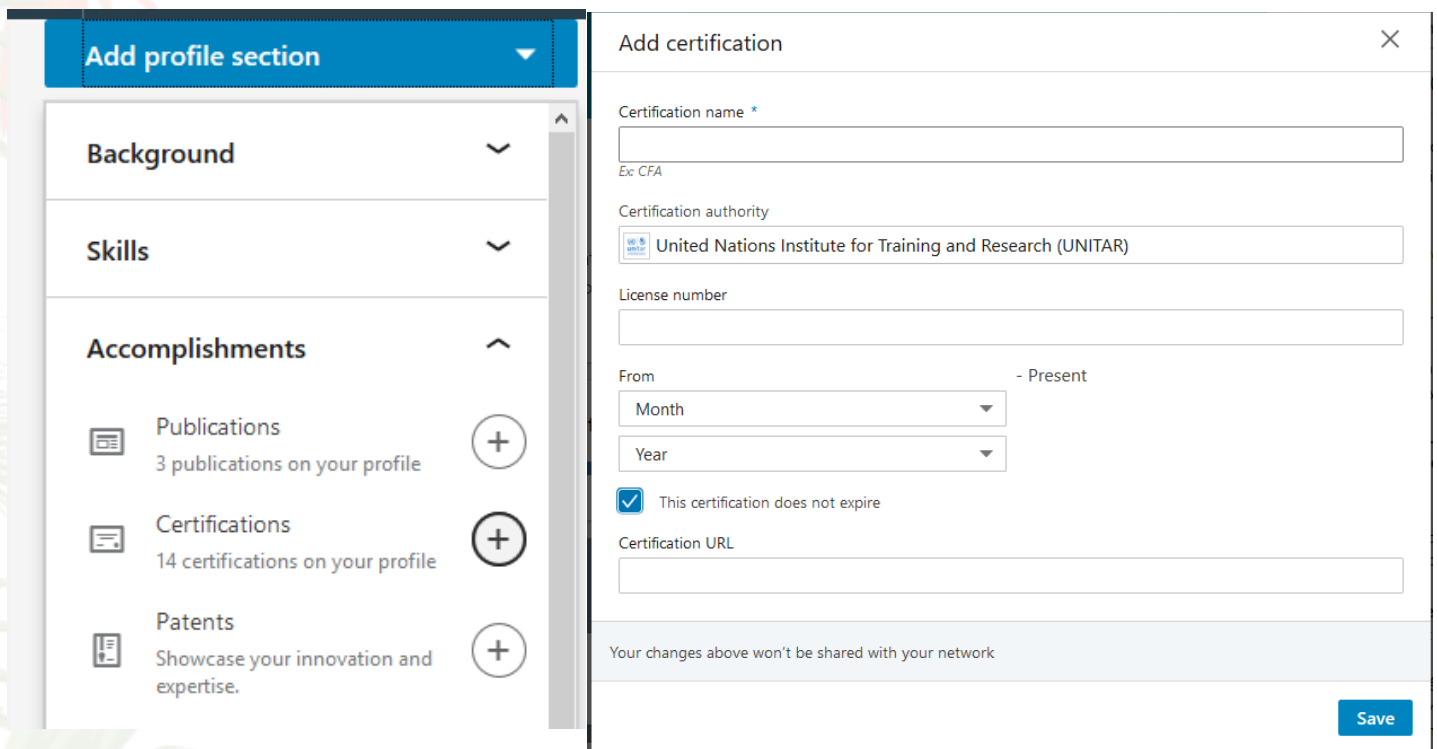
Sharing your achievement

ADDING BADGES TO LINKEDIN

To add your badges to your LinkedIn profile you need to

- Log into your profile
- Click on 'view profile'
- Select 'add profile section' and then 'accomplishments'
- Click on 'Certifications' and add:
 - The title of the badge
 - The certification authority (UNITAR)
 - The date you obtained the badge
 - The link to the badge

THERE IS NO EXPIRATION DATE - YOUR ACHIEVEMENTS DO NOT EXPIRE



The image shows a screenshot of the LinkedIn 'Add certification' form. On the left, a sidebar titled 'Add profile section' shows categories: Background, Skills, and Accomplishments. Under 'Accomplishments', there are options for Publications (3 on profile), Certifications (14 on profile), and Patents (Showcase your innovation and expertise). The 'Certifications' option is selected, leading to the 'Add certification' form on the right. The form includes fields for:

- Certification name (with a placeholder 'Ex: CFA')
- Certification authority (with a dropdown menu showing 'United Nations Institute for Training and Research (UNITAR)')
- License number
- From (Month and Year dropdowns) - Present
- A checkbox labeled 'This certification does not expire' which is checked.
- Certification URL

 At the bottom, a note states 'Your changes above won't be shared with your network' and a 'Save' button is visible.

ADDING CERTIFICATES TO LINKEDIN

Adding a certificate to LinkedIn works the same way as adding a badge:

- Log into your profile
- Click on 'view profile'
- Select 'add profile section' and then 'accomplishments'
- Click on 'Certifications' and add:
 - The title of the certificate
 - The certification authority (UNITAR)
 - The date you obtained the certificate

Questions on Badges & Certificates

I AM ONLY INTERESTED IN ONE MODULE - CAN I STILL SHOW MY ACHIEVEMENT?

Yes! Thanks to the badge system all your work is rewarded and you can add individual badges to LinkedIn and other social media to show your achievement. If you change your mind you can always come back and complete another module within the 4 month period.

SHOULD I FOCUS ON EARNING BADGES OR ON EARNING THE CERTIFICATE?

That depends on your personal goals and needs.

- Are you only interested in the topic of only one or two modules?
Then just go for the badge and share your achievement in this field. Our badge system makes sure that all your hard work is recognised.
- Are you interested in the entire course?
You earn badges automatically by passing the quizzes and once you passed them all, you will automatically get your certificate.
- Are you unsure what you will need?
Just start by the module that interests you the most. You can always come back to the course and take the other modules within the 4 month period.

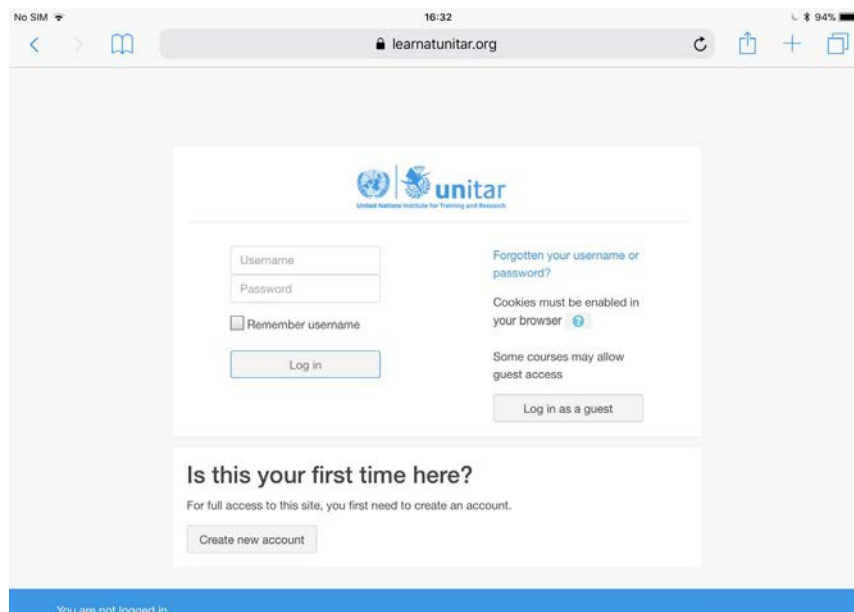
SHOULD I ADD THE BADGES OR THE CERTIFICATE TO LINKEDIN?

- Did you complete the entire course or are you planning to do so?
We suggest you share only the certificate, because:
 - The certificate shows that you mastered all aspects of the course.
 - The certificate shows a great level of commitment and determination to complete the whole course.
 - People tend to attribute more value to a 'certificate'.
- Did you earn one/two/three badges of the topics you are interested most in?
We suggest you share all you badges, because:
 - A badge shows that you mastered the topic of one specific module.
 - You can tailor your profile to your own specific needs with the badges.

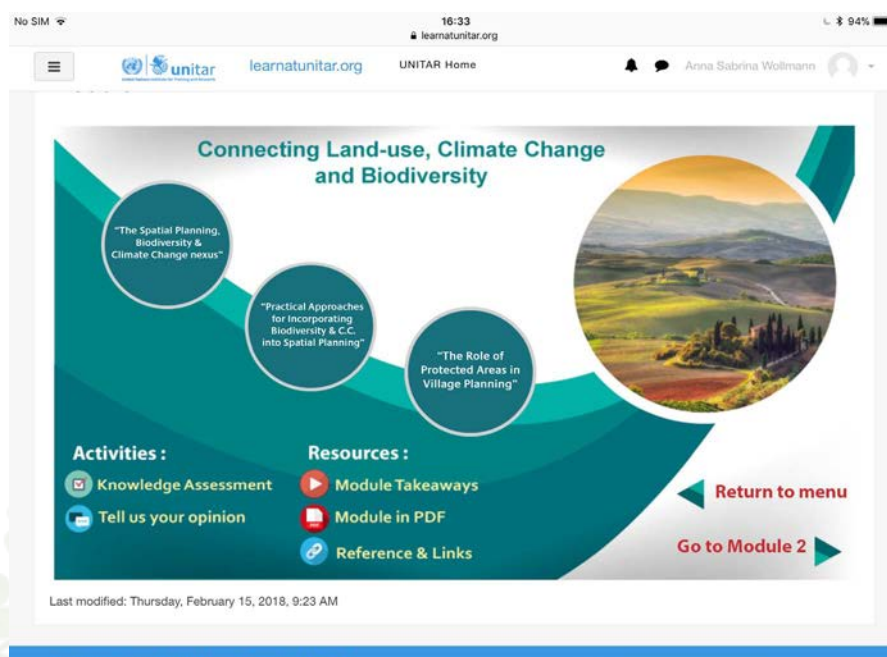
Access on a mobile device

BROWSER

- You can also access the course and the lessons through your tablet (android or iOS).
- Open the learnatunitar.org in your tablet's browser.
- Enter your username and password.



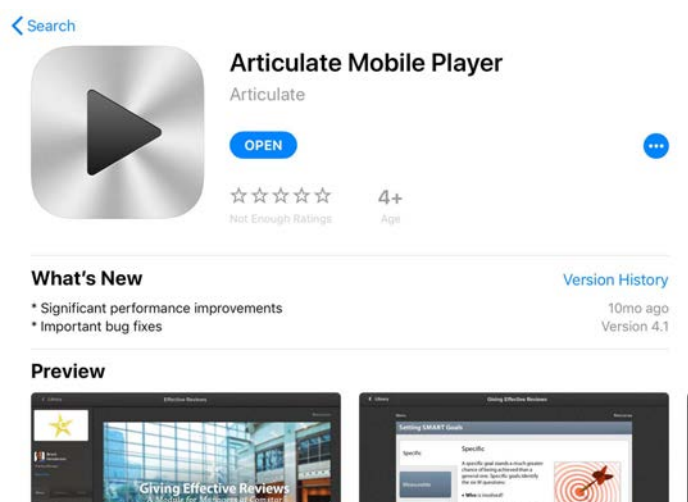
- We recommend holding your tablet in landscape for better display functionality.



Access on a mobile device

STORYLINE APP

- You can also the lessons through the articulate storyline app on your mobile tablet (android or iOS).
- The app is available in the Apple App Store, Google Play App Store and the Windows App Store.



- Download the app and open it.
- You will be asked to enter the link to the lesson.
- We will provide the links in the general announcements.



DISCLAIMER NOTE

Our course is currently **not** compatible with the Moodle App. We are working to resolve this issue. For the moment, please use the other mobile means explained above.

Requirements & Support

TECHNICAL REQUIREMENTS



These are the minimum hardware and software requirements:

- Platform: Windows XP, Vista, 7, 8, 10 Mac, Linux.
- Hardware: 512 MB of RAM or above, 2GB of free disk space.
- Latest version of the following Browsers:
 - Google Chrome
 - Mozilla Firefox
 - Opera
 - Internet Explorer
 - Safari
- Pop-up blocker: OFF
- Software:
 - Adobe Acrobat Reader (download for free at <https://get.adobe.com/reader/>).
 - Foxit reader (download for free at <https://www.foxitsoftware.com/pdf-reader/>)
 - Microsoft Office or Open Office (download for free at <https://www.openoffice.org/download/other.html>)

UNITAR SUPPORT



You can direct all your queries related to technical issues to:

Law4dev Portfolio:
info.ilp@unitar.org

Your messages will be taken into consideration and addressed as soon as possible.